



December 27, 2021

## EU LABELING RECOMMENDATION

Per recent recommendations by the Dutch Ministry of Health, Wellbeing and Sport, together with our European consultants, RIBUS, Inc. has submitted applications for both rice bran extract (Nu-RICE®, Nu-BAKE®) and rice hulls (Nu-FLOW®, Nu-FLAC®) for evaluation and subsequent approval of additive status.

This process could take up to two years, but in the interim, we recommend you label our ingredients to include the technological function, as per the direction below:

1. Nu-RICE®: **Application Number: FAD-2021-2571**
  - a. Origin plant part: rice bran
  - b. Possible labeling options, depending on the application:
    - i. Rice Bran Extract (emulsifier)
    - ii. Rice Bran Extract (extrusion aid)
    - iii. Rice Bran Extract (hydration aid)
    - iv. Rice Bran Extract (filler)
2. Nu-BAKE®: **Application Number: FAD-2021-2571**
  - a. Origin plant part: rice bran
  - b. Possible labeling options:
    - i. Rice Bran Extract (dough conditioner)
    - ii. Rice Bran Extract (emulsifier)
3. Nu-FLOW®: **Application Number: FAD-2021-2590**
  - a. Origin plant part: rice seed
  - b. Possible labeling options:
    - i. Rice Fiber (anti-caking agent)
    - ii. Rice Fiber (flavor carrier)
4. Nu-FLAC®: **Application Number: FAD-2021-2590**
  - a. Origin plant part: rice seed
  - b. Possible labeling options:
    - i. Rice Fiber (flavor carrier)
5. Nu-MAG®:
  - a. A blend of four ingredients originating from *Oryza sativa*, *Acacia senegal*, and *Helianthus annuus*
  - b. Possible labeling options:
    - i. Rice Extract Blend (Rice Bran Extract, Rice Fiber, Gum Arabic, and Sunflower Oil) (lubricant)
    - ii. Nu-MAG® (Rice Bran Extract, Rice Fiber, Gum Arabic, and Sunflower Oil)(lubricant)
6. Nu-BIND®:
  - a. A blend of five ingredients originating from *Cyamopsis tetragonoloba*, *Acacia senegal*, *Agave tequilana Weber*, and *Oryza sativa*



- b. Possible labeling options:
    - i. Gum Fiber Blend (Guar Gum, Gum Arabic, Agave Fiber, Rice Fiber, and Agave Syrup) (binder)
    - ii. Nu-BIND® (Guar Gum, Gum Arabic, Agave Fiber, Rice Fiber, and Agave Syrup) (binder)
7. Nu-SORP™ Oil:
- a. A blend of three ingredients originating from *Oryza sativa*, *Avena sativa*, and *Helianthus annuus*
  - b. Possible labeling options:
    - i. Fiber Blend (Rice Fiber, Oat Fiber, and Sunflower Lecithin) (adsorption aid)
    - ii. Nu-SORP™ Oil (Rice Fiber, Oat Fiber, and Sunflower Lecithin) (adsorption aid)
8. Nu-SORP™ Water:
- a. A blend of three ingredients originating from *Oryza sativa*, *Plantago ovata*, and *Musa cavendish*
  - b. Possible labeling options:
    - i. Fiber Fruit Blend (Rice Fiber, Psyllium Fiber, and Banana Flour) (adsorption aid)
    - ii. Nu-SORP™ Water (Rice Fiber, Psyllium Fiber, and Banana Flour) (adsorption aid)

RIBUS, Inc. continues to explore additional applications for our ingredients. If you have any questions, please contact RIBUS or your local distributor. RIBUS, Inc. is not liable for any damages as the above labeling options are recommendations only. Since different countries may adhere to different rules, RIBUS urges each customer to consult legal counsel prior to finalizing his/her finished product ingredient listing to confirm the accuracy of the labeling preference.

Best regards,

A handwritten signature in blue ink that reads "Karen Hansen".

Karen Hansen  
Regulatory / Documents Manager



January 01, 2021

## Nu-FLOW® EU LABELING RECOMMENDATION

RIBUS, Inc. is pleased to affirm that conventional or organic Nu-FLOW®, as well as all food business operations involved in the supply and manufacturing chain, comply with the standards set forth, implemented, and upheld by the European Commission (EC) and/or the European Union (EU).

RIBUS recommends that its EU Customers label Nu-FLOW® as “rice fiber.” When asked to identify the part of the plant the ingredient comes from, the accurate answer is the “rice seed.”

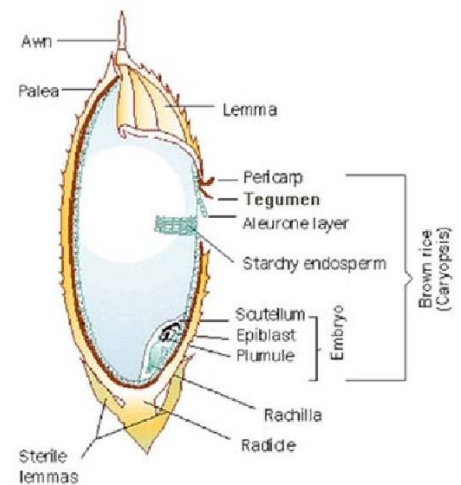
The [International Rice Research Institute](#) (IRRI) defines the rice seed to include the hull, bran, germ, and endosperm.

The cultivated rice plant, *Oryza sativa*, is an annual grass of the Gramineae family. It grows to about 1.2 meters in height. The leaves are long and flattened, and its inflorescence - the typical arrangement or cluster of grass flowers - is made up of spikelets. Each spikelet has one or more florets bearing flowers that produce the fruit or grain.

[According to the IRRI](#), the parts of the rice seed are as follows:

### Rice Grain

1. The embryo or germ gives rise to a seedling, which is composed of the shoot and roots.
2. The endosperm is a food reserve for the germinating embryo during its early growth.
3. The endosperm is made up mostly of starch. It also contains sugars, proteins, and fats.
4. The hull is the hard cover of the seed.
5. Most of the improved rice cultivars either do not have awns, or the awn is very small.



According to various EU Member States, the rice seed is an approved plant part:

[Health Belgium](#), updated 2013/10/28, page 38:



Nom scientifique	Nederlandse naam	Nom français	Beperkingen en voorwaarden	Limites et conditions	Limits and conditions	NF status
<b>Wetenschappelijke</b> <i>Orthosiphon aristatus</i> (Bl.) Miq. (= <i>Orthosiphon stamineus</i> Benth.) (*)	Javaanse Nierthee	Thé de Java, Moustaches de chat	Enkel het gebruik van volgende plantendelen is toegelaten: blad.  De voedingssupplementen waaraan het blad van de plant <i>Orthosiphon aristatus</i> (Bl.) Miq. werd toegevoegd, mogen slechts in de handel gebracht worden onder de volgende voorwaarde: het innemen van de in de etikettering of in de reclame aanbevolen dagelijks te gebruiken portie ervan mag niet voor gevolg hebben dat de daardoor ingenomen hoeveelheid hoger is dan de hoeveelheid equivalent met 5,5 g gedroogde bladeren.	Seule l'utilisation de suivantes parties de plantes est autorisée: feuille.  Les compléments alimentaires qui contiennent la feuille de la plante <i>Orthosiphon aristatus</i> (Bl.) Miq., ne peuvent être mises dans le commerce qu'à la condition suivante: l'absorption de la portion journalière recommandée dans l'étiquetage ou dans la publicité ne peut avoir comme conséquence que la quantité ingérée d'extrait soit supérieure à la quantité d'extrait équivalent à 5,5 g de feuilles séchées.	Only the use of following plant parts is authorized : leaf.	
<i>Oryza sativa</i> L.	Rijst	Riz	Enkel het gebruik van volgende plantendelen is toegelaten: zaad.	Seule l'utilisation de suivantes parties de plantes est autorisée: graine.	Only the use of following plant parts is authorized : seed	NOT NFS

[LegiFrance Modified 24, June 2014](#), establishing the list of plants, other than mushrooms, authorized in food supplements and the conditions of their use. See Annexe I.:

### Annexe I [Learn more about this article ...](#)

#### PLANTS WHICH ARE AUTHORIZED IN FOOD SUPPLEMENTS

Scientific NAME	FAMILY	Vernacular NAME	PARTS used	SUBSTANCES TO BE MONITORED	RESTRICTIONS
<i>Oryza sativa</i> L.	Poaceae	Rice	seed		

[The Federal Office of Consumer Protection & Food Safety \(BVL\), page 86:](#)

3 List of Substances of the Competent Federal Government and Federal State Authorities – Category "Plants and plant parts"

Stock plant (Latin)	Plant part	F	NF	MP	trad. MP	List A	List B	List C
<i>Origanum majorana</i> L., syn. <i>Amaracus majorana</i> (L.) SCHINZ et THELLUNG, <i>Majorana hortensis</i> MOENCH	Herb	× S						
<i>Origanum majorana</i> L., syn. <i>Amaracus majorana</i> (L.) SCHINZ et THELLUNG, <i>Majorana hortensis</i> MOENCH	Fruit		Not NFS					×
<i>Origanum vulgare</i> L., syn. <i>Origanum anglicum</i> HILL., <i>Origanum creticum</i> L., <i>Origanum latifolium</i> MILL., <i>Origanum venosum</i> WILLD. ex BENTH.	Herb	× S			×			
<i>Orthosiphon aristatus</i> (BLUME) MIQUEL, syn. <i>Orthosiphon stamineus</i> BENTH., <i>Orthosiphon spicatus</i> (THUNB.) BAK., <i>Ocimum grandiflorum</i> BOLD	Leaf	× T		×	×		×	
<i>Oryza sativa</i> L.	Fruit, seed	×						

F = Food



As stated above, RIBUS recommends that EU customers declare both conventional or organic Nu-FLOW® as “rice fiber.” It is sourced from conventional or organic “rice seed,” respectively.

If you have any questions, please contact the main office at the number below.

Best regards,

A handwritten signature in black ink that reads "Karen M. Hansen". The signature is written in a cursive, flowing style.

Karen Hansen  
Regulatory / Documents Manager